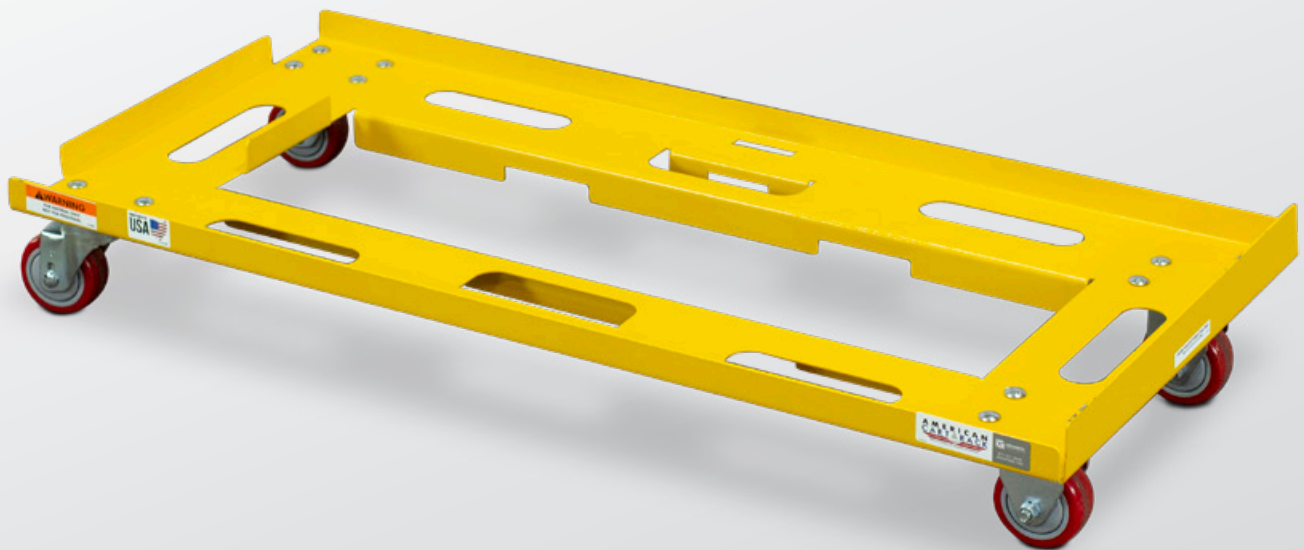




# MANTIS CHAIR PALLET

## INSTRUCTION MANUAL



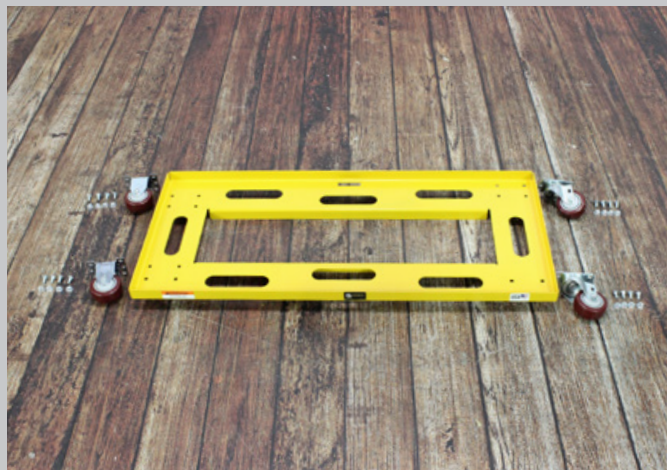
67485

# CASTER INSTALLATION

COMPONENTS		
ITEM NO	QTY	DESCRIPTION
1	1	Cart Body
2	2	Fixed Casters
4	2	Swivel Casters
5	16	5/16" Carriage Bolt (5/8" L)
6	16	5/16" Nut

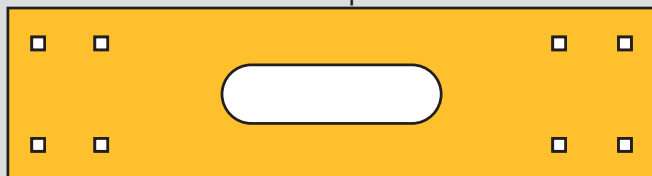
TOOLS		
1/2" Wrench or Socket		



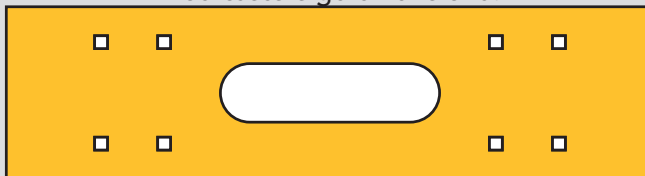
Narrow caster position.



Wide caster position.



Fixed casters go on this end.



Swivel casters go on this end.



# 1

Note the two ends of the chair pallet are different. One end has 4 holes inset further than the other end.

# 2

Install the fixed casters on the narrow end and the swivel casters on the wide end.



# 3

Install the casters using 4 bolts and nuts. Finger tighten nuts into place.



# 4

Tighten all of the nuts down using a 1/2" wrench or socket.